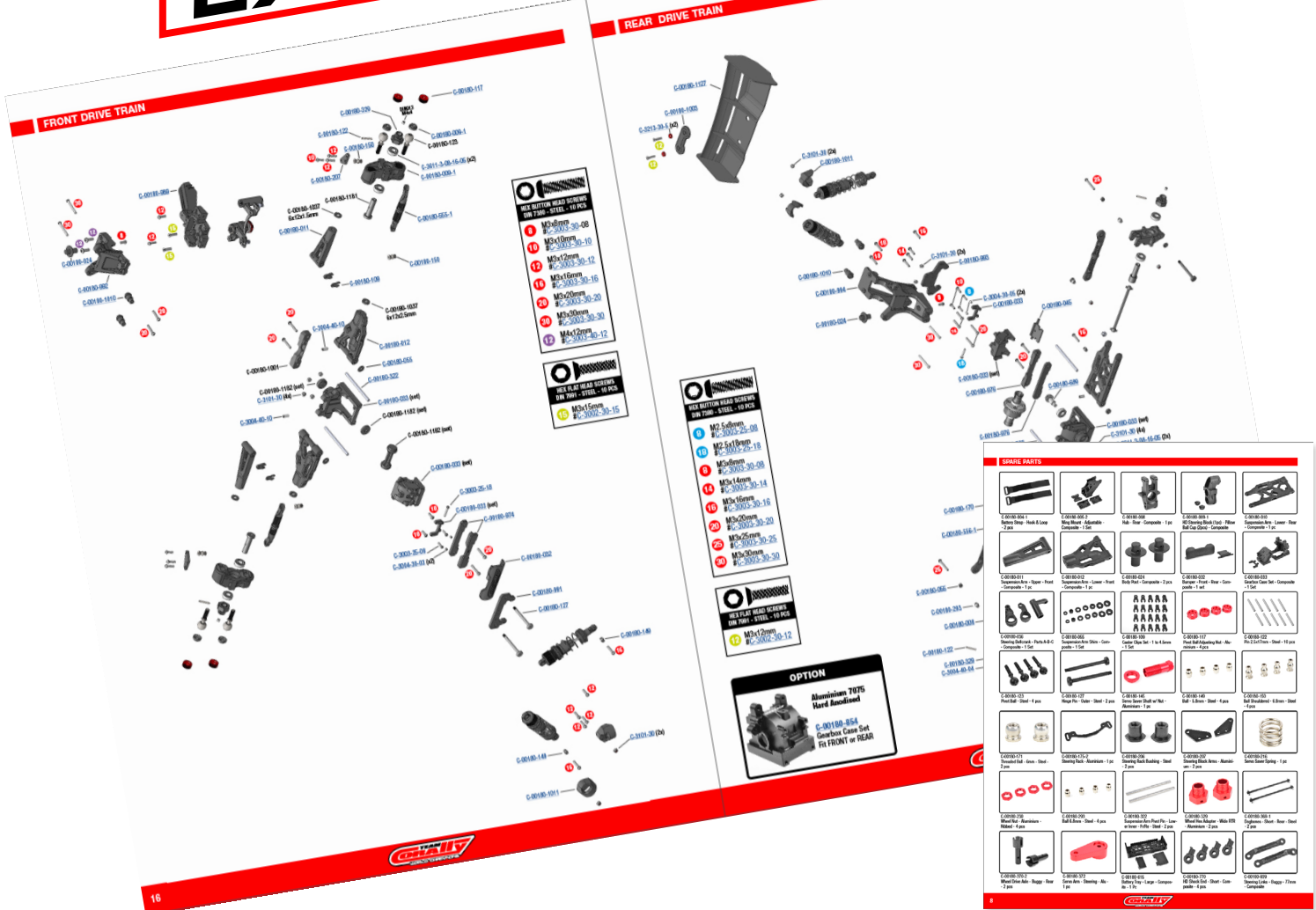


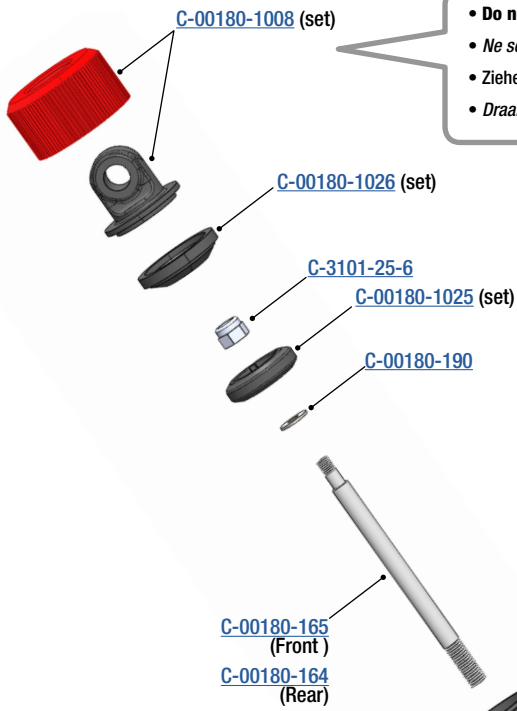


Engineered to be the fastest

EXPLODED VIEWS

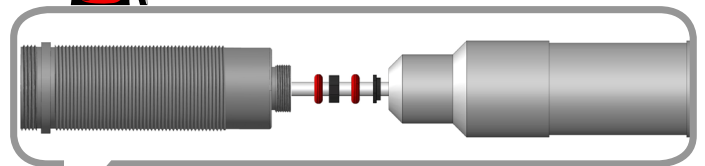


#C-00289 - SYNCRO 2WD
 Version : 2025-03-05



- Do not overtighten the Shock Cap to prevent deformation of the silicone Shock Bladder.
- Ne serrez pas trop le capuchon de l'amortisseur pour éviter la déformation de la membrane en silicone.
- Ziehen Sie die Dämpferabdeckung nicht zu fest an, um eine Verformung der Silikonmembran zu vermeiden.
- Draai de schokkap niet te strak aan om vervorming van het siliconenmembraan te voorkomen.

- Place all small parts on a screwdriver (Ø3mm) and push them into the shock body. All parts will be properly aligned.
- Placez toutes les petites pièces sur un tournevis (Ø3mm) et poussez-les dans le corps de l'amortisseur. Toutes les pièces seront correctement alignées.
- Setzen Sie alle Kleinteile auf einen Schraubendreher (Ø3mm) und drücken Sie sie in den Dämpferkörper. Alle Teile werden richtig ausgerichtet.
- Plaats alle kleine onderdelen op een schroevendraaier (Ø3mm) en duw ze in de behuizing van de schokdemper. Alle onderdelen zullen goed uitgelijnd zijn.



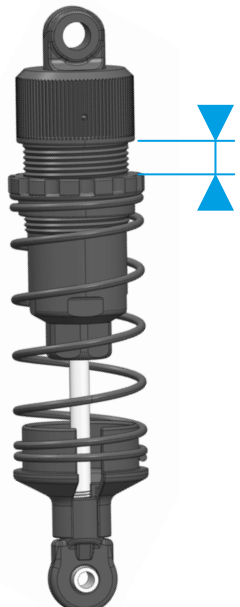
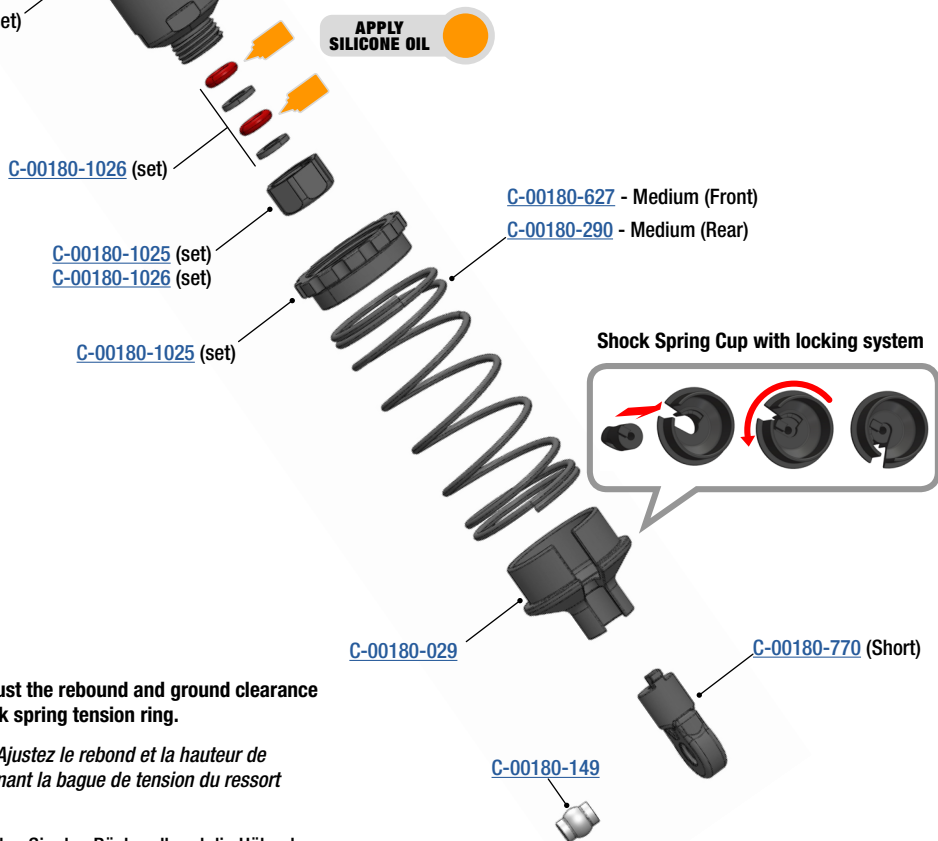
APPLY SILICONE OIL

OPTION

Aluminium Hard Anodised

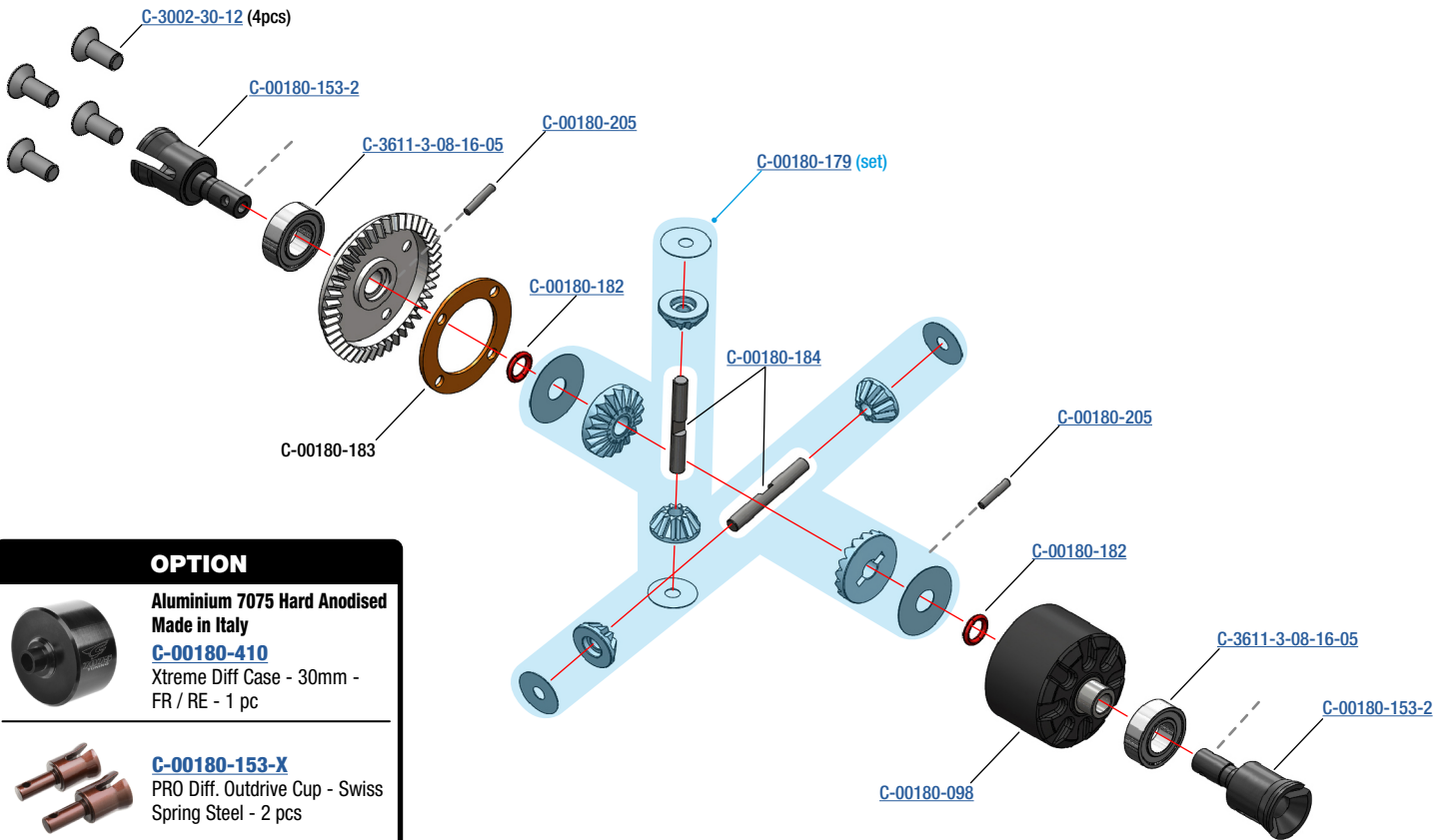
C-00180-135-1
Shock Absorber "Ready Build" - 600 Cps Silicone Oil - FRONT

C-00180-137-1
Shock Absorber "Ready Build" - 600 Cps Silicone Oil - REAR



- Spring tension: Adjust the rebound and ground clearance by turning the shock spring tension ring.
- Tension du ressort : Ajustez le rebond et la hauteur de garde au sol en tournant la bague de tension du ressort d'amortisseur.
- Federspannung: Stellen Sie den Rückprall und die Höhe der Bodenfreiheit ein, indem Sie den Spannungsring der Stoßdämpferfeder drehen.
- Veerspanning: Stel de terugvering en bodemvrijheid in door aan de veerspanningsring van de schokdemper te draaien.

REAR DIFFERENTIAL



OPTION



**Aluminium 7075 Hard Anodised
Made in Italy**
C-00180-410
Xtreme Diff Case - 30mm -
FR / RE - 1 pc

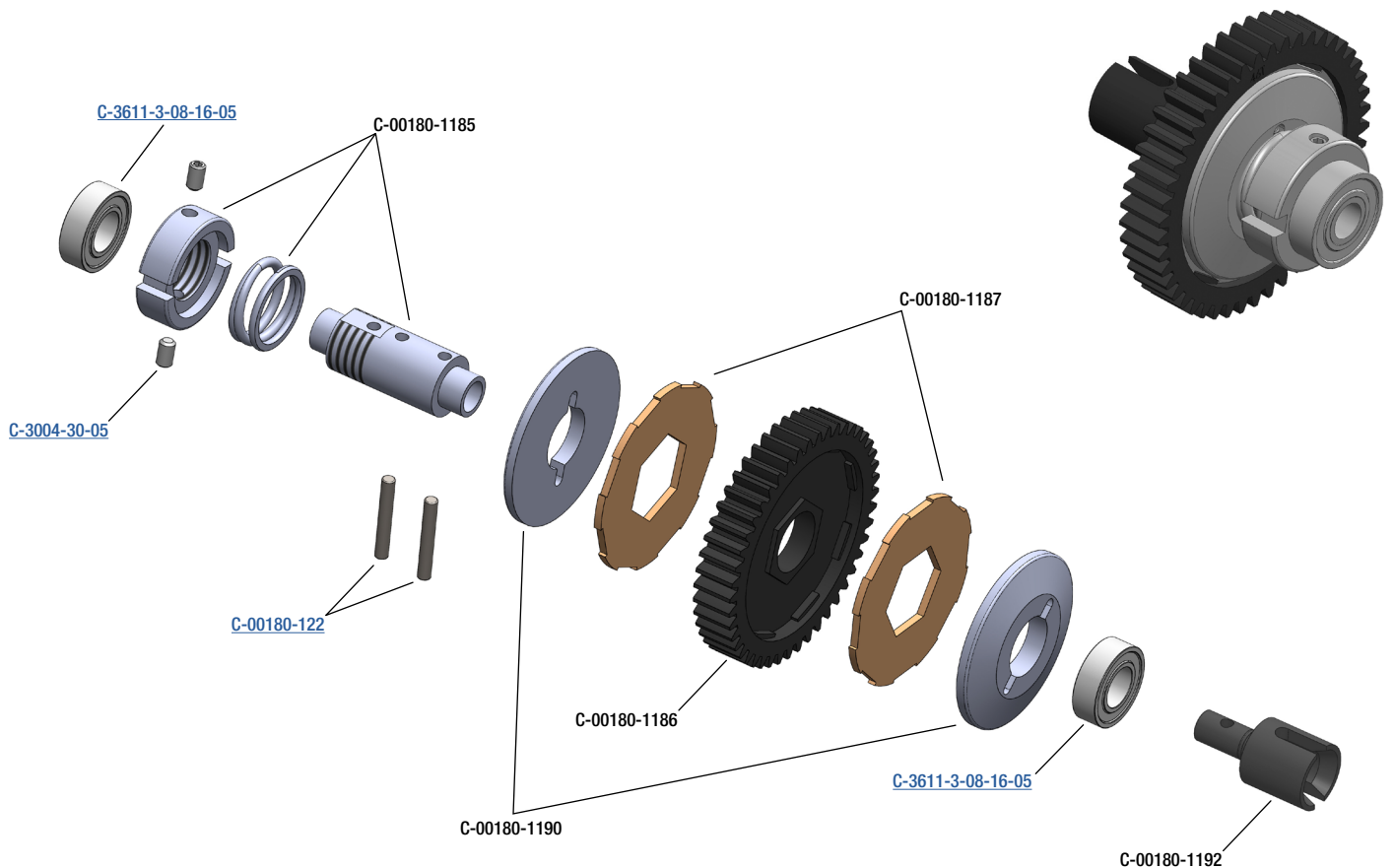


C-00180-153-X
PRO Diff. Outdrive Cup - Swiss
Spring Steel - 2 pcs

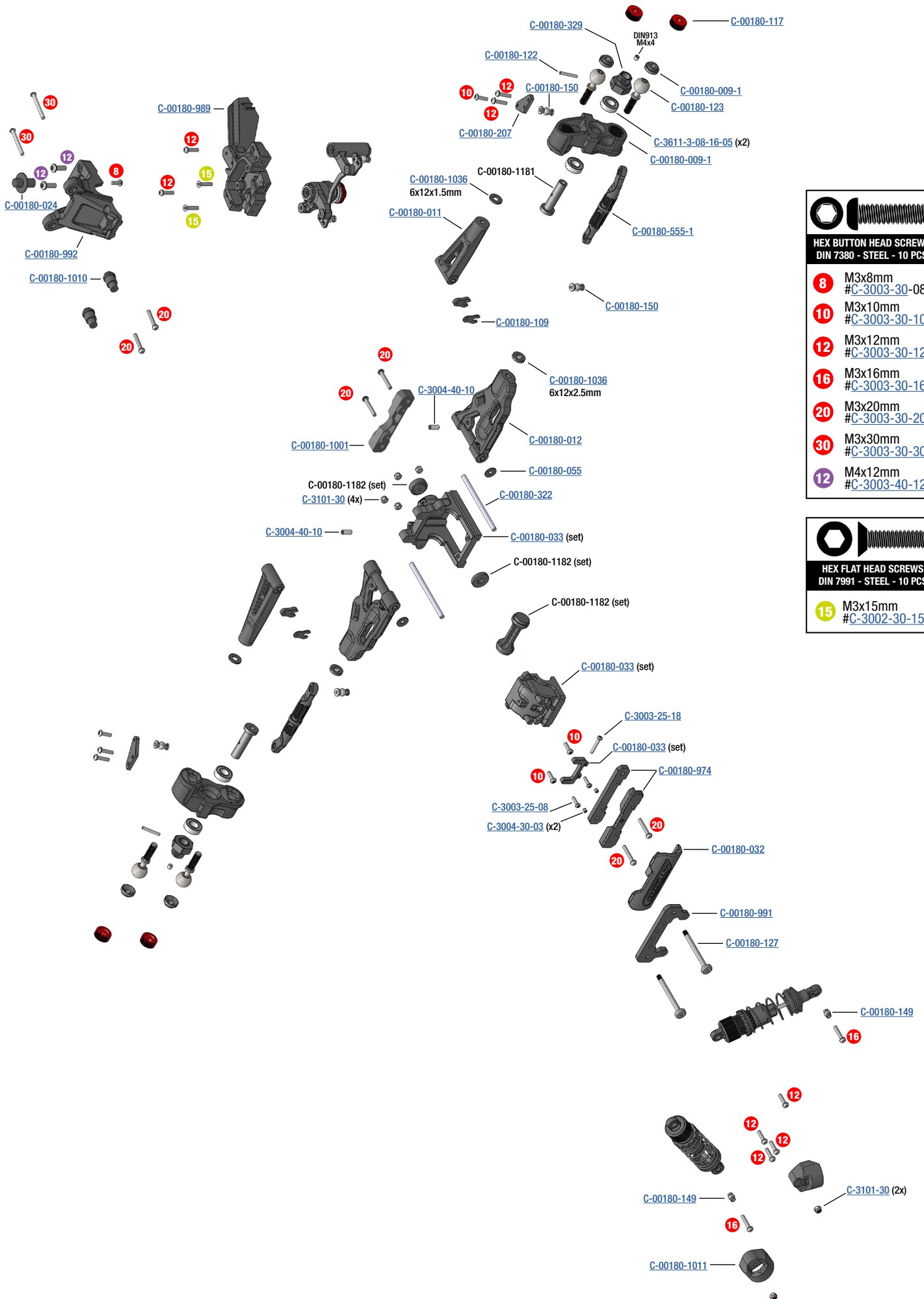


C-00180-178
Diff. Bevel Gear 43T - Steel - 1 pc

CENTRE SLIPPER



FRONT DRIVE TRAIN



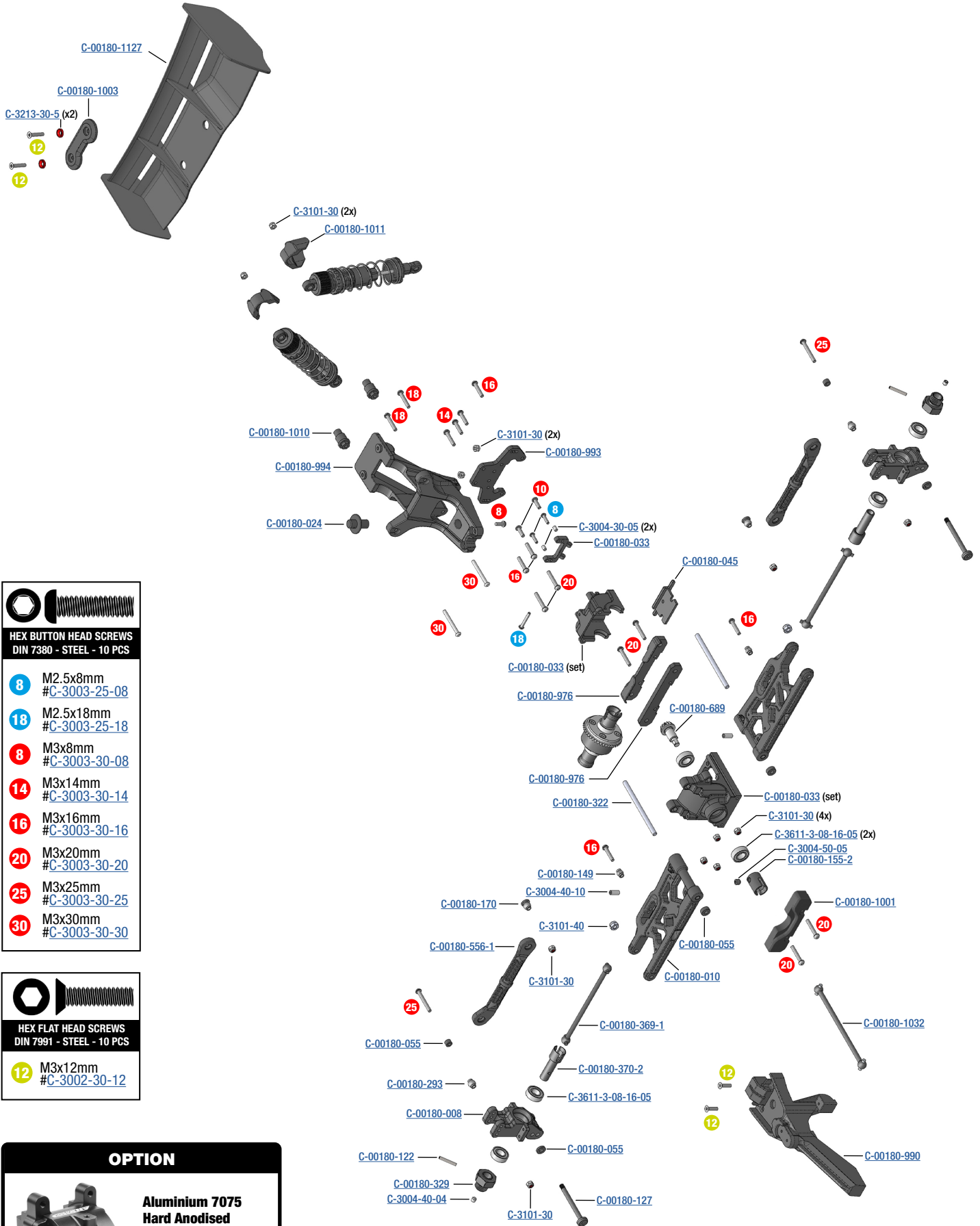
**HEX BUTTON HEAD SCREWS
DIN 7380 - STEEL - 10 PCS**

- 8 M3x8mm #C-3003-30-08
- 10 M3x10mm #C-3003-30-10
- 12 M3x12mm #C-3003-30-12
- 16 M3x16mm #C-3003-30-16
- 20 M3x20mm #C-3003-30-20
- 30 M3x30mm #C-3003-30-30
- 12 M4x12mm #C-3003-40-12

**HEX FLAT HEAD SCREWS
DIN 7991 - STEEL - 10 PCS**

- 15 M3x15mm #C-3002-30-15

REAR DRIVE TRAIN



HEX BUTTON HEAD SCREWS
DIN 7380 - STEEL - 10 PCS

- 8** M2.5x8mm
#C-3003-25-08
- 18** M2.5x18mm
#C-3003-25-18
- 8** M3x8mm
#C-3003-30-08
- 14** M3x14mm
#C-3003-30-14
- 16** M3x16mm
#C-3003-30-16
- 20** M3x20mm
#C-3003-30-20
- 25** M3x25mm
#C-3003-30-25
- 30** M3x30mm
#C-3003-30-30

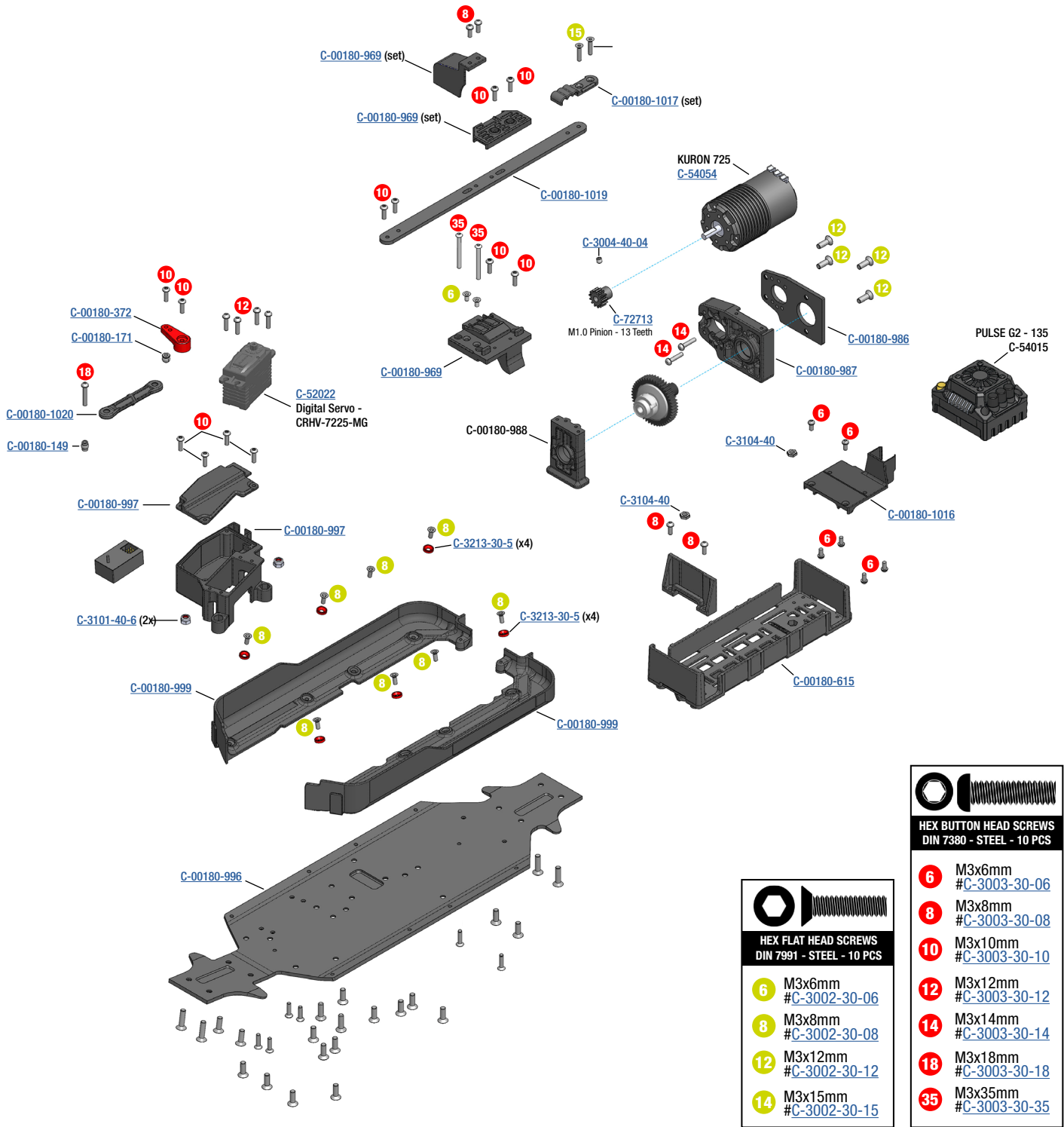
HEX FLAT HEAD SCREWS
DIN 7991 - STEEL - 10 PCS

- 12** M3x12mm
#C-3002-30-12

OPTION

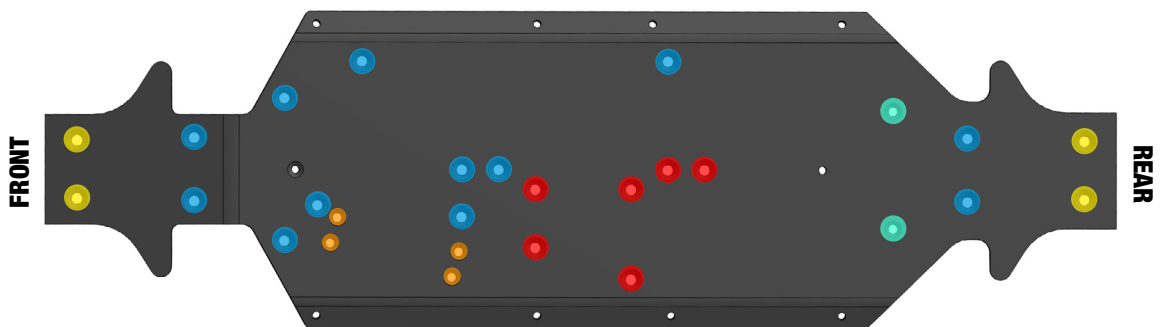
Aluminium 7075 Hard Anodised

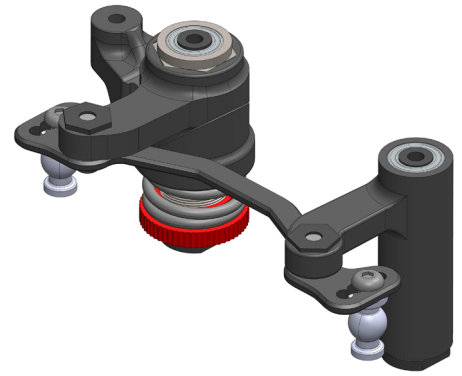
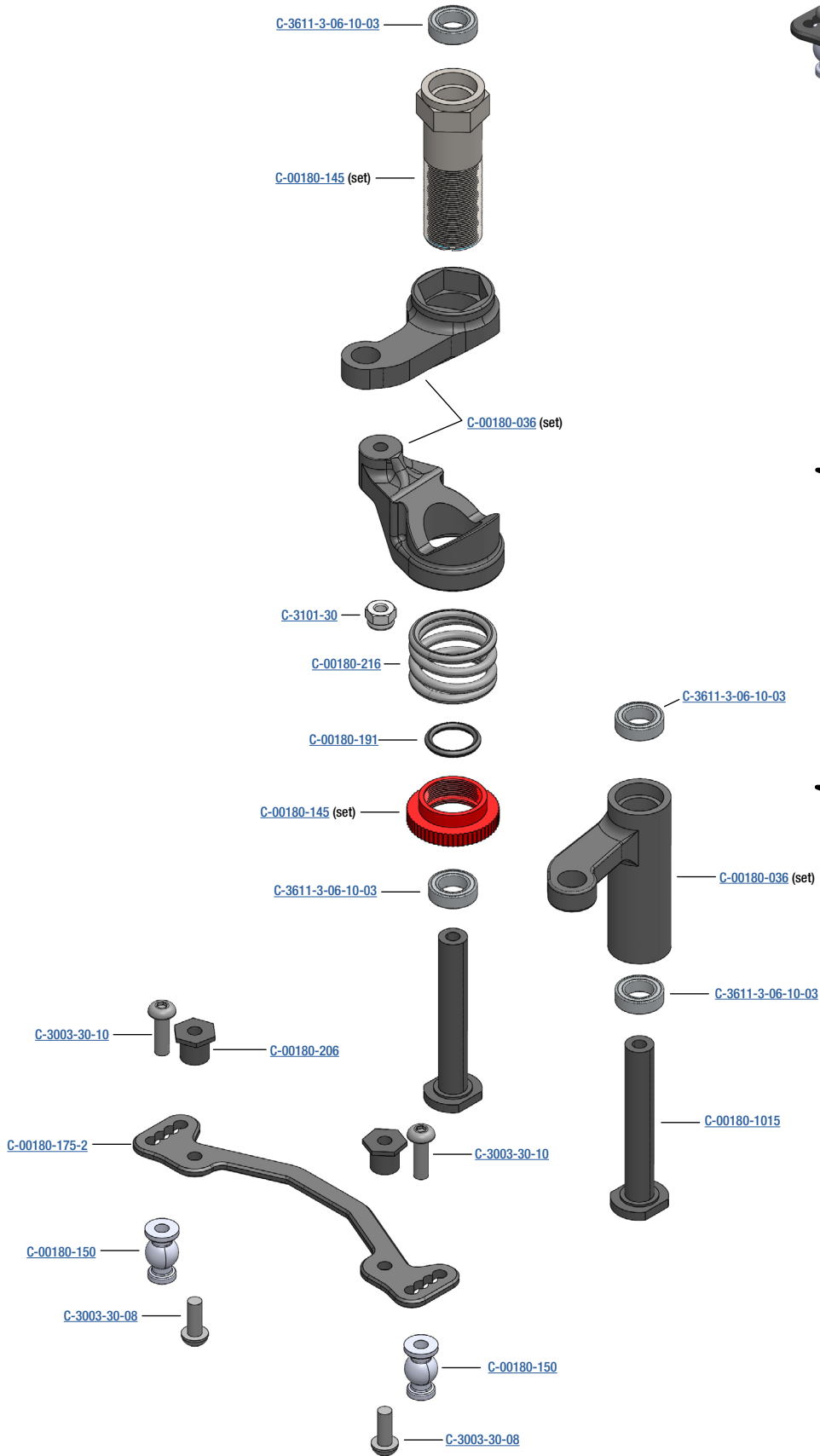
C-00180-854
Gearbox Case Set
Fit FRONT or REAR



CHASSIS - SCREWS DESCRIPTION

- M3x12mm DIN7991 #C-3002-30-12
- M3x18mm DIN7991 #C-3002-30-18
- M4x12mm DIN7991 #C-3002-40-12
- M4x14mm DIN7991 #C-3002-40-14
- M4x16mm DIN7991 #C-3002-40-16





OPTION



C-00180-266
 Servo Saver Steering Arm - Aluminium 7075 T6 - Hard Anodised - Black - 1 pc

OPTION

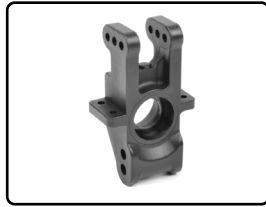


C-00180-831
 Steering Rack - Dual Stiffener - Aluminium - 1 Pc

SPARE PARTS



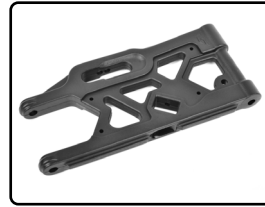
C-00180-004-1
Battery Strap - Hook & Loop
- 2 pcs



C-00180-008
Hub - Rear - Composite - 1 pc



C-00180-009-1
HD Steering Block (1pc) - Pillow
Ball Cup (2pcs) - Composite



C-00180-010
Suspension Arm - Lower - Rear
- Composite - 1 pc



C-00180-011
Suspension Arm - Upper - Front
- Composite - 1 pc



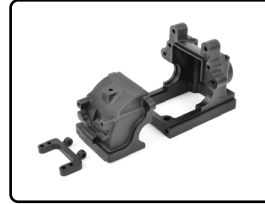
C-00180-012
Suspension Arm - Lower - Front
- Composite - 1 pc



C-00180-024
Body Post - Composite - 2 pcs



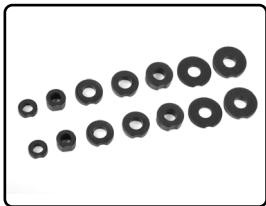
C-00180-032
Bumper - Front - Rear - Com-
posite - 1 set



C-00180-033
Bumper - Front - Rear - Com-
posite - 1 set



C-00180-036
Steering Bellcrank - Parts A-B-C
- Composite - 1 Set



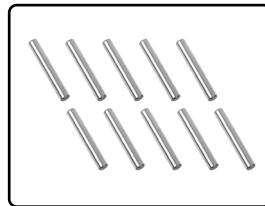
C-00180-055
Suspension Arm Shim - Com-
posite - 1 Set



C-00180-109
Caster Clips Set - 1 to 4.5mm
- 1 Set



C-00180-117
Pivot Ball Adjusting Nut - Alu-
minium - 4 pcs



C-00180-122
Pin 2.5x17mm - Steel - 10 pcs



C-00180-123
Pivot Ball - Steel - 4 pcs



C-00180-127
Hinge Pin - Outer - Steel - 2 pcs



C-00180-145
Servo Saver Shaft w/ Nut -
Aluminium - 1 pc



C-00180-149
Ball - 5.8mm - Steel - 4 pcs



C-00180-150
Ball Shouldered - 6.8mm - Steel
- 4 pcs



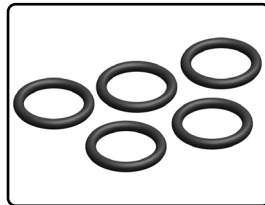
C-00180-170
Ball - 6.8mm - Steel - 2 pcs



C-00180-171
Threaded Ball - 6mm - Steel -
2 pcs



C-00180-175-2
Steering Rack - Aluminium - 1 pc



C-00180-191
O-Ring - Silicone - 9x12mm
- 5 pcs



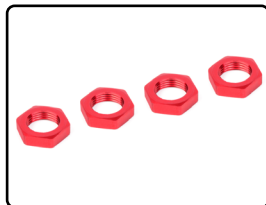
C-00180-206
Steering Rack Bushing - Steel
- 2 pcs



C-00180-207
Steering Block Arms - Alumi-
nium - 2 pcs



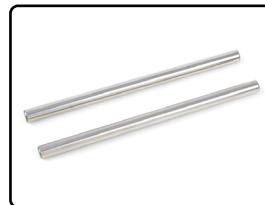
C-00180-216
Servo Saver Spring - 1 pc



C-00180-230
Wheel Nut - Aluminium -
Ribbed - 4 pcs



C-00180-293
Ball 6.8mm - Steel - 4 pcs



C-00180-322
Suspension Arm Pivot Pin - Low-
er Inner - Fr/Re - Steel - 2 pcs



C-00180-329
Wheel Hex Adapter - Wide RTR
- Aluminium - 2 pcs



C-00180-369-1
Dogbones - Short - Rear - Steel
- 2 pcs



C-00180-370-2
Wheel Drive Axle - Buggy - Rear
- 2 pcs



C-00180-372
Servo Arm - Steering - Alu -
1 pc

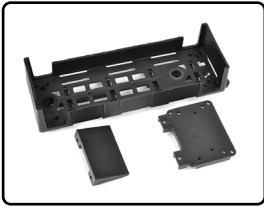


C-00180-555-1
Steering Links - Buggy - 77mm
- Composite

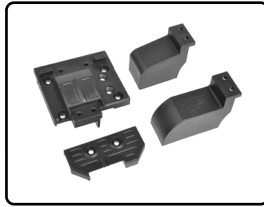


C-00180-556-1
Camber Links Rear - 93mm -
Composite - 2 pcs

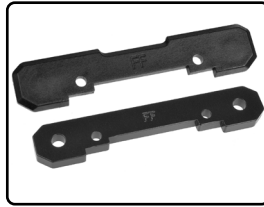
SPARE PARTS



C-00180-615
Battery Tray - Large - Composite - 1 set



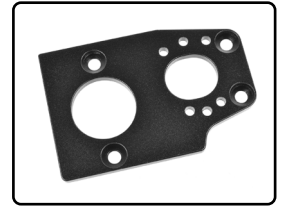
C-00180-969
Centre Diff Plate - Pinion Gear Cover - XB - Composite - 1 pc



C-00180-974
Suspension Arm Mount - FR - Alu. 4mm - Composite Cover - 1 Set



C-00180-976
Suspension Arm Mount - RR - Alu. 4mm - Composite Cover - 1 Set



C-00180-986
Motor Mount Plate - Aluminium - 1 pc



C-00180-987
Motor Mount / Diff Bulkhead - Composite - 1 pc



C-00180-989
Chassis Brace - EB - Front - Composite - 1 pc



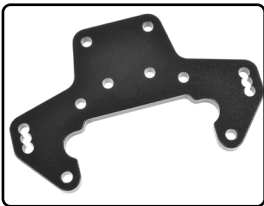
C-00180-990
Chassis Brace - EB - Rear - Composite - 1 pc



C-00180-991
Hinge Pin Plate - EB - Front - Aluminium 4mm - 1 pc



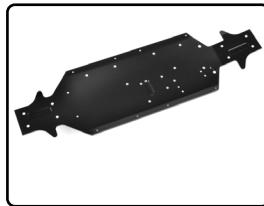
C-00180-992
Shock Tower - EB - Front - Composite - 1 pc



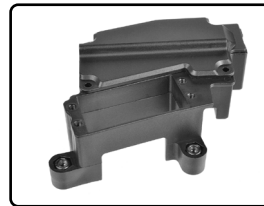
C-00180-993
Shock Tower - Wing Mount - EB - Rear - Composite - 1 pc



C-00180-994
Shock Tower - Wing Mount - EB - Rear - Composite - 1 pc



C-00180-996
Chassis - EB - Aluminium 3mm - Black - 1 pc



C-00180-997
Servo Mount - Receiver Box - M23 - Composite - 1 Set



C-00180-999
Side Guards - EB - Left-Right - Composite - 1 Set



C-00180-1001
Suspension Arm Mount - RF - FR - Composite - 1 Set



C-00180-1003
Wing Washer - EB - Composite - 1 Pc



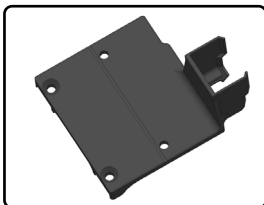
C-00180-1006
Off-Road 1/8 Buggy Tires - Scorpion XTB - Rims - 1 pair



C-00180-1010
Shock Spacer - 4 pcs



C-00180-1015
Servo Saver Post - EB - Steel - 2 pcs



C-00180-1016
ESC Plate - Composite - 1 pc



C-00180-1020
Servo Steering Link - Composite - 1 pc



C-00180-1032
Drive Shaft - Centre - 97mm - Steel - 1 pc



C-00180-1034
Pinion Cover for Centre Diff Plate - Composite - 1 pc



C-00180-1036
Spacers - Composite - 6 pcs



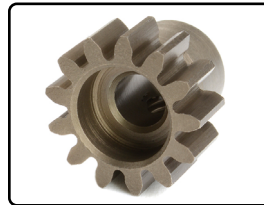
C-00180-1127-B
Wing - Composite - 1 pc



C-00180-1196
Off-Road 1/8 Buggy Tires - Scorpion XTB - Rims - 1 pair



C-00180-1194
Off-Road 1/8 Tires - REAR Scorpion XTB - Rims - 1 pair



C-72713
M1.0 Pinion - Hardened Steel - Shaft Diameter 5mm

SYNCR0 - BODY - PAINTED



C-00180-1055-2R
SYNCR0 - Body - RED



C-00180-1055-2B
SYNCR0 - Body - BLUE

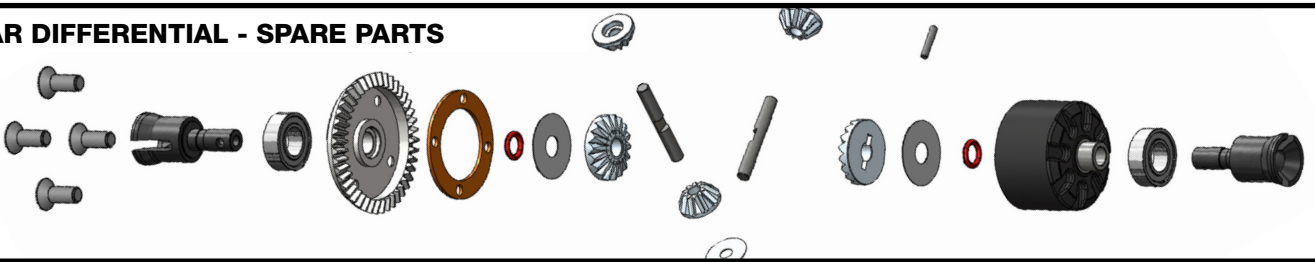


C-00180-1055-2G
SYNCR0 - Body - GREEN



C-00180-1055-2O
SYNCR0 - Body - ORANGE

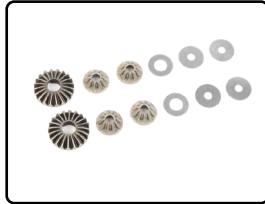
REAR DIFFERENTIAL - SPARE PARTS



C-00180-689
Bevel Pinion 13T - Steel - 1 pc



C-00180-688
Diff. Bevel Gear 43T - Molded Steel - 1 pc



C-00180-179
Planetary Diff. Gears - Steel - 1 Set



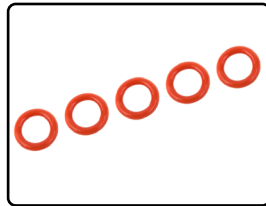
C-00180-184
Gear Diff. Pin - Steel - 2 pcs



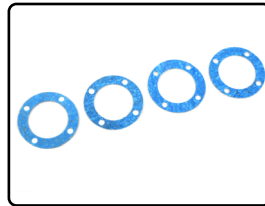
C-00180-205
Diff. Outdrive Pin - 2x11,8mm - Steel - 4 pcs



C-00180-098
Diff Case - FR-RE - Composite - 1 pc



C-00180-182
O-Ring - Silicone - 5x8mm - 5 pcs



C-00180-183
Diff. Gasket - 4 pcs



C-00180-153-2
Diff. Outdrive Cup - Steel - 2 pcs

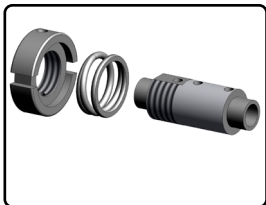
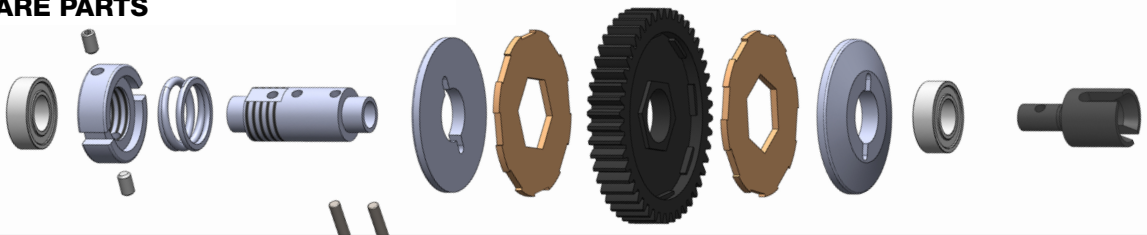


C-00180-155-2
Pinion Outdrive Cup - Steel - 2 pcs

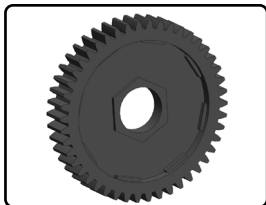


C-3611-3-08-16-05
Ball Bearing ABEC 3 - 8x16x5mm - 2 pcs

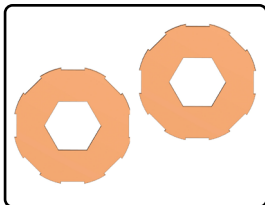
SLIPPER - SPARE PARTS



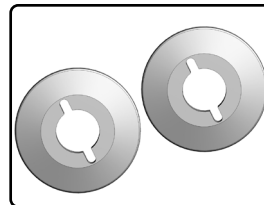
C-00180-1185
Slipper Shaft - Aluminium - 1 set



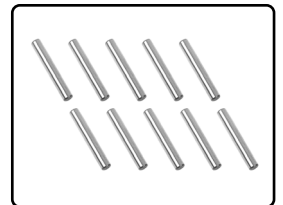
C-00180-1186
Spur Gear - Composite - 1 pc



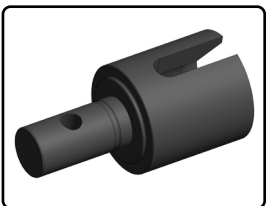
C-00180-1187
Slipper Pads - 2 pcs



C-00180-1190
Slipper Clutch Plate - 2 pcs



C-00180-122
Pin 2.5x17mm - Steel - 10 pcs



C-00180-1192
Slipper. Outdrive Cup - Steel - 1 pc



C-3611-3-08-16-05
Ball Bearing ABEC 3 - 8x16x5mm - 2 pcs

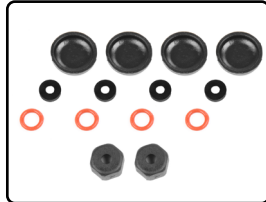
SHOCK ABSORBER - SPARE PARTS



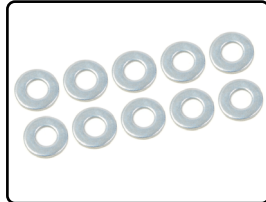
C-00180-1011
Shock Cap Protector - EB - Composite - 2 pcs



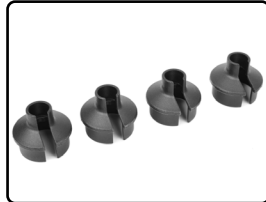
C-00180-1025
Maintenance Kit 1 - Composite Shocks - 1 Set



C-00180-1026
Maintenance Kit 2 - Composite Shocks - 1 Set



C-00180-190
Shock Washer - 2.5x6x0.5mm - Steel - 10 pcs



C-00180-029
Shock Spring Cup - Composite - 4 pcs



C-00180-164
Shock Shaft - 66mm - Rear - Steel - 2 pcs



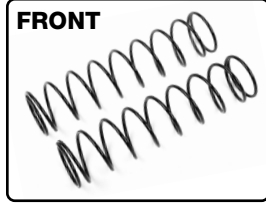
C-00180-165
Shock Shaft - 55mm - Front - Steel - 2 pcs



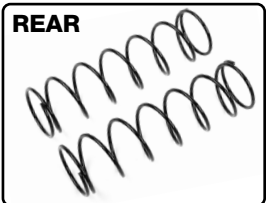
C-00180-770
HD Shock End - Short - Composite - 4 pcs



C-00180-1008
Shock Cap - Ring Set - 2 pcs



C-00180-627
Shock Spring - Medium - Front - 2 pcs



C-00180-290
Shock Spring - Medium - 1.6mm - 84-86mm - 2 pcs



C-00180-1023
Shock Absorber body - Front - Composite - 2 pcs



C-00180-1030
Shock Absorber body - Rear - Composite - 2 pcs

ELECTRONICS - COMPOSANTS ÉLECTRONIQUES • ELEKTRONIKTEILE • ELEKTRONICA-ONDERDELEN



C-54015
Speed Controller - PULSE G2 - 135 - Brushless - 2-4S



C-52022
Digital Servo - High Voltage - Metal Gear - 25 Kg Torque



C-54054
Kuron 725 - Brushless Motor - Sensorless



C-59060
CT2R 2-Channel 2.4GHZ Digital Radio Control System

**FOR ALL SPARE & TUNING PARTS
VISIT THE "CAR SPARES - TUNING / 1/8 SPORT - RTR SERIES" SECTION ON
WWW.CORALLY.COM.**



<https://corally.com/en/catalog/car-spares-tuning/18-sport-rtr-series>

OPTION PARTS



C-00180-153-X
PRO Diff. Outdrive Cup - Swiss Spring Steel - 2 pcs



C-00180-155-X
PRO Pinion Outdrive Cup - Swiss Spring Steel - 2 pcs



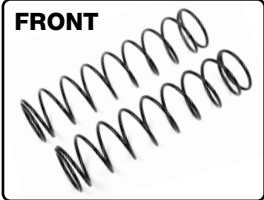
C-00180-1019
Chassis Brace - EB - Aluminium - 1 pc



C-00180-831
Steering Rack - Dual Stiffener - Aluminium - 1 Pc

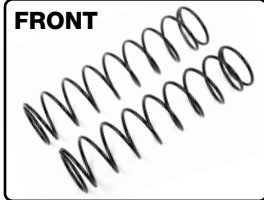


C-00180-266
Servo Saver Steering Arm - Alu. 7075 T6 - Hard Anodised - 1 pc



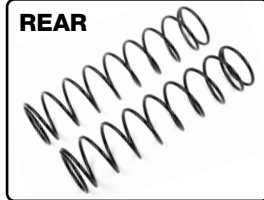
FRONT

C-00180-626
Shock Spring - Soft - 1.4mm - 75-77mm - 2 pcs



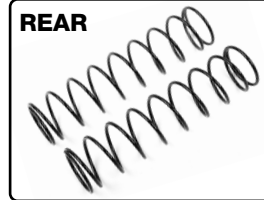
FRONT

C-00180-628
Shock Spring - Hard - 1.8mm - 75-77mm - 2 pcs



REAR

C-00180-289
Shock Spring - Soft - 1.4mm - 84-86mm - 2 pcs



REAR

C-00180-291
Shock Spring - Hard - 1.8mm - 84-86mm - 2 pcs



C-00180-365
Universal Joint Drive Shaft - Buggy - Rear - 1 pc



C-72715
M1.0 Pinion - 15T - Hardened Steel - Shaft Diameter 5mm



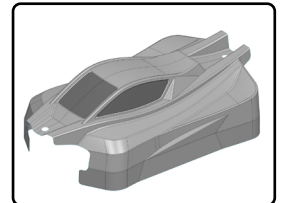
C-72717
M1.0 Pinion - 17T - Hardened Steel - Shaft Diameter 5mm



C-00180-156
Bevel Pinion 13T - CNC Cut-Steel - 1 pc



C-00180-178
Diff. Bevel Gear 43T - CNC Cut Steel - 1 pc



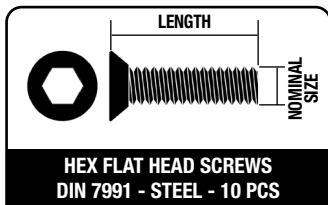
C-00180-1055
Clear Body - Buggy SYNCRO - 1 pc



Body Decal Sheet

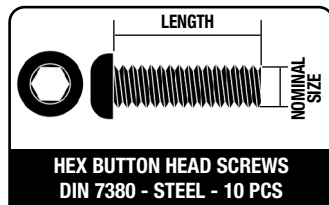
C-00180-1055-3R • Red - 1 pc
C-00180-1055-3B • Blue - 1 pc
C-00180-1055-3G • Green - 1 pc
C-00180-1055-3O • Orange - 1 pc

STEEL SCREWS



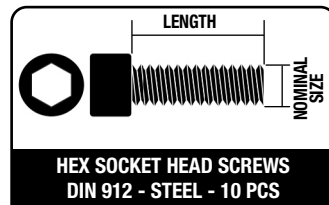
HEX FLAT HEAD SCREWS
DIN 7991 - STEEL - 10 PCS

REF	NOMINAL SIZE	LENGTH MM
C-3002-25-06	M2.5	6
C-3002-25-08	M2.5	8
C-3002-25-10	M2.5	10
C-3002-25-12	M2.5	12
C-3002-25-16	M2.5	16
C-3002-25-18	M2.5	18
C-3002-25-20	M2.5	20
C-3002-30-06	M3	6
C-3002-30-08	M3	8
C-3002-30-10	M3	10
C-3002-30-12	M3	12
C-3002-30-14	M3	14
C-3002-30-16	M3	16
C-3002-30-18	M3	18
C-3002-30-20	M3	20
C-3002-30-25	M3	25
C-3002-30-35	M3	35
C-3002-40-08	M4	8
C-3002-40-10	M4	10
C-3002-40-12	M4	12
C-3002-40-14	M4	14
C-3002-40-16	M4	16
C-3002-40-18	M4	18
C-3002-40-20	M4	20
C-3002-40-25	M4	25
C-3002-40-30	M4	30



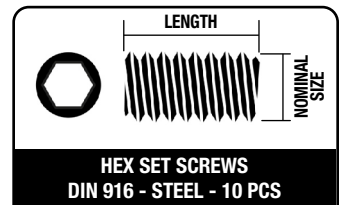
HEX BUTTON HEAD SCREWS
DIN 7380 - STEEL - 10 PCS

REF	NOMINAL SIZE	LENGTH MM
C-3003-25-06	M2.5	6
C-3003-25-08	M2.5	8
C-3003-25-10	M2.5	10
C-3003-25-12	M2.5	12
C-3003-25-16	M2.5	16
C-3003-25-18	M2.5	18
C-3003-25-20	M2.5	20
C-3003-30-06	M3	6
C-3003-30-08	M3	8
C-3003-30-10	M3	10
C-3003-30-12	M3	12
C-3003-30-14	M3	14
C-3003-30-16	M3	16
C-3003-30-18	M3	18
C-3003-30-20	M3	20
C-3003-30-25	M3	25
C-3003-30-35	M3	35
C-3003-40-08	M4	8
C-3003-40-10	M4	10
C-3003-40-12	M4	12
C-3003-40-14	M4	14
C-3003-40-16	M4	16
C-3003-40-18	M4	18
C-3003-40-20	M4	20
C-3003-40-25	M4	25
C-3003-40-30	M4	30



HEX SOCKET HEAD SCREWS
DIN 912 - STEEL - 10 PCS

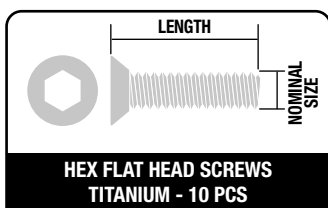
REF	NOMINAL SIZE	LENGTH MM
C-3000-25-06	M2.5	6
C-3000-25-08	M2.5	8
C-3000-25-10	M2.5	10
C-3000-25-12	M2.5	12
C-3000-25-16	M2.5	16
C-3000-25-18	M2.5	18
C-3000-25-20	M2.5	20
C-3000-30-06	M3	6
C-3000-30-08	M3	8
C-3000-30-10	M3	10
C-3000-30-12	M3	12
C-3000-30-14	M3	14
C-3000-30-16	M3	16
C-3000-30-18	M3	18
C-3000-30-20	M3	20
C-3000-30-25	M3	25
C-3000-30-35	M3	35
C-3000-40-08	M4	8
C-3000-40-10	M4	10
C-3000-40-12	M4	12
C-3000-40-14	M4	14
C-3000-40-16	M4	16
C-3000-40-18	M4	18
C-3000-40-20	M4	20
C-3000-40-25	M4	25
C-3000-40-30	M4	30



HEX SET SCREWS
DIN 916 - STEEL - 10 PCS

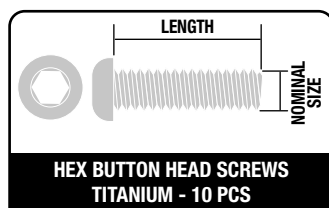
REF	NOMINAL SIZE	LENGTH MM
C-3004-30-03	M3	3
C-3004-30-05	M3	5
C-3004-30-08	M3	8
C-3004-30-10	M3	10
C-3004-30-12	M3	12
C-3004-30-20	M3	20
C-3004-40-04	M4	4
C-3004-40-06	M4	6
C-3004-40-08	M4	8
C-3004-40-10	M4	10
C-3004-40-12	M4	12
C-3004-50-04	M5	4
C-3004-50-05	M5	5

TITANIUM SCREWS



HEX FLAT HEAD SCREWS
TITANIUM - 10 PCS

REF	NOMINAL SIZE	LENGTH MM
C-3022-30-06	M3	6
C-3022-30-08	M3	8
C-3022-30-10	M3	10
C-3022-30-12	M3	12
C-3022-30-14	M3	14
C-3022-30-16	M3	16
C-3022-30-18	M3	18
C-3022-30-20	M3	20
C-3022-40-08	M4	8
C-3022-40-10	M4	10
C-3022-40-12	M4	12
C-3022-40-16	M4	16
C-3002-40-20	M4	20



HEX BUTTON HEAD SCREWS
TITANIUM - 10 PCS

REF	NOMINAL SIZE	LENGTH MM
C-3023-30-06	M3	6
C-3023-30-08	M3	8
C-3023-30-10	M3	10
C-3023-30-12	M3	12
C-3023-30-16	M3	16
C-3023-30-20	M3	20
C-3023-30-25	M3	25
C-3023-40-06	M4	6
C-3023-40-08	M4	8
C-3023-40-10	M4	10
C-3023-40-12	M4	12
C-3023-40-16	M4	16
C-3023-40-20	M4	20
C-3023-40-25	M4	25

FOR ALL SCREWS AND NUTS
VISIT THE "SCREWS - NUTS - WASHERS" SECTION ON
WWW.CORALLY.COM.





Team Corally is a registered trademark licensed to
JSP Group Intl bvba • Geelseweg 80 • B-2250 OLEN • Belgium
Tel: +32 14 25 92 94 • Info@corally.com
WWW.CORALLY.COM